

# NTT Communications data center services

Key european data centers



**Global ICT Partner**  
Innovative. Reliable. Seamless.



NTT Communications can offer our customers the following data center services:

- Colocation pre-provisioned packages
- Colocation bespoke solutions
- Managed Colocation
- Cloud Services
- Managed Hosting

# Flexible and secure data center services to suit you

NTT Communications' state of the art data centers in Europe have been built to the highest industry standards, meeting Tier III requirements as classified by the Uptime Institute.

Outsourcing IT infrastructure, networking equipment and business continuity solutions in a resilient and secure environment, NTT Communications' data center facilities meet the needs of any enterprise organisation looking for colocation facilities in Europe.

With over ten years' experience providing managed infrastructure and hosting services, NTT Communications is able to understand customer requirements and help overcome challenges by providing flexible solutions.

## BUSINESS BENEFITS

### Prime location

Strategically located across Europe with direct access to major transportation links including motorways, rail networks and international airports, our data center facilities provide a gateway to the rest of Europe for all local and multi-national customers.

### New generation data center

Our data center facilities are equipped with N+1 redundancy for cooling system and 2N for UPS and generators to ensure the availability of your IT systems. They are built to provide environments of ultra-high power density. The passive cooling system can cost-effectively keep up to +20 kW server rack running at safe temperatures.

### Facility security

To ensure your critical IT assets are secure and never compromised, access to our data center facilities is restricted and follows secure access standards. Security measures include fully staffed facilities 24x7x365, with closed circuit video and a variety of secure access controls.

As part of our ISO 27001 accreditation, we maintain our own business continuity plan, externally audited every six months, which, alongside PCI DSS compliance, reassures our customers that they can trust us to contain their data securely.

### Advanced network performance

NTT Communications' european data centers are carrier neutral based providing a wide scope of connectivity options.

NTT Communications IPv6 compliant, tier-one global IP network backbone and NTT Communications virtual private network solutions, MPLS, VPLS, ARCSTAR are available at our european data centers. Guaranteed roundtrip return times and latency levels ensure high-quality performance and response times.

### Future growth

Our data center facilities have been built with scalability and flexibility in mind, ensuring we can meet your future requirements as your business needs change or grow.

### Customer portal

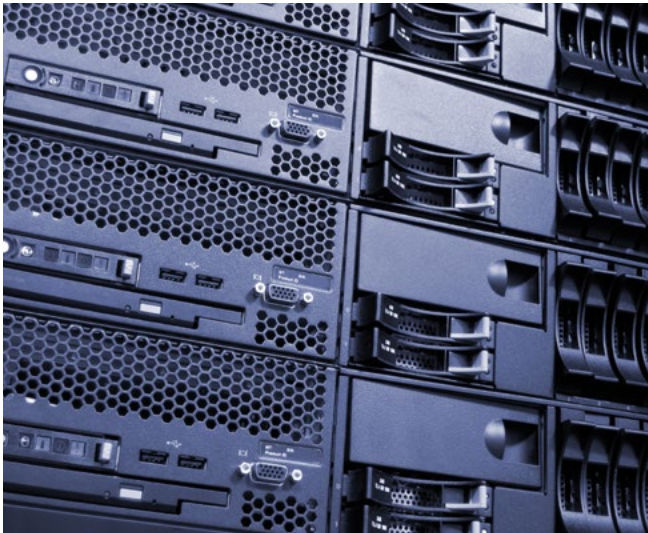
NTT Communications' advanced customer portal allows you to manage and have visibility of all your services from a single tool. Detailed reports and historic information is available to ensure you have full control of your platform.

# Cost-control and flexibility together

## SERVICES AVAILABLE

### Colocation pre-provisioned packages

For standard colocation packages we have pre-provisioned fast-delivery rack bundles. These are available at up to 20KW per rack. We also have highly competitive “all included bundles” which consist of rack + remote hands + connectivity package.



### Colocation bespoke solutions

Our experts will design a data center bespoke solution for you, taking in to account your security requirements and your expansion plan.

You don't have to pay or take risks for the services you are not using we will work together with you on your expansion and future growth requirements.

Specific security solutions include cages with custom access control, CCTV, PCI solutions.

## ADDITIONAL SERVICES

### Remote/Smart hands and data center operations services.

Rely on us to operate your data center services. NTT Communications can offer a wide range of remote / smart hands and operation services. From rebooting hardware, to complex equipment maintenance we will tailor a flexible solution to meet your requirements.

### Managed Internet connection

By using our managed Tier I network burstable IP access solution and addressing for your platform you avoid losing time configuring complex protocols, dealing with multiple providers. You just have to “plug and play”.

### Data Backup services

Our cost effective backup solution for colocation packages give you the reassurance of best in class resiliency and minimal downtime.

### SIG – Services Interconnect Gateway

Connecting your colocation platform to our cloud services will permit you to have a full integrated hybrid solution combining the benefits of our cloud and visualization products with your colocation, security and private data center platform.



# Managed colocation



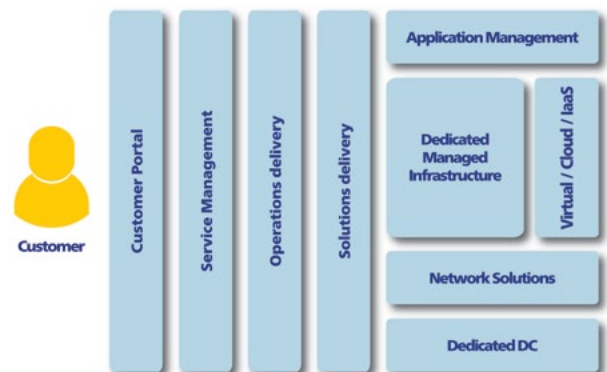
Managed colocation goes one step beyond standard colocation services to provide different levels of managed services on top of a colocation or private data center area. It gives you full flexibility to choose how the infrastructure is managed between you and NTT Communications.

This flexibility means managed colocation is ideal for customers with complex requirements. Our services can be configured to meet your needs, rather than us offering a predefined solution that may be inefficient.

Managed colocation services include (but not limited to) any combination of the following services:

- Layer 2 & Layer 3 network solutions
- Asset and inventory management
- Operating system management
- Application and middleware management
- Storage & Backup solutions
- Managed private cloud solutions
- Tailored security and disaster recovery solutions
- Interface with public and enterprise cloud

All of these services can be deployed in a single site, in a main and disaster recovery configuration or in a globally distributed deployment with different data centers around the world.



# Everything you expect from an enterprise data center provider

## Quality and reliability

- ✓ Tier 3+ data centers
- ✓ Highly redundant systems for power, cooling and network
- ✓ 24x7x365 ITIL-aligned operations
- ✓ ISO/IEC 27001:2005 accreditation in Europe with regular external audits
- ✓ ISO/IEC 20000-1:2005 accreditation in Europe
- ✓ Globally enforced data-center standards in line with the US Telecommunications Industry Association, The Uptime Institute and ASHRAE

## Peace of mind

- ✓ State-of-the-art security

- ✓ State-of-the-art fire detection and suppression
- ✓ State-of-the-art flood and earthquake protection
- ✓ PCI-DSS v2 certification in Europe

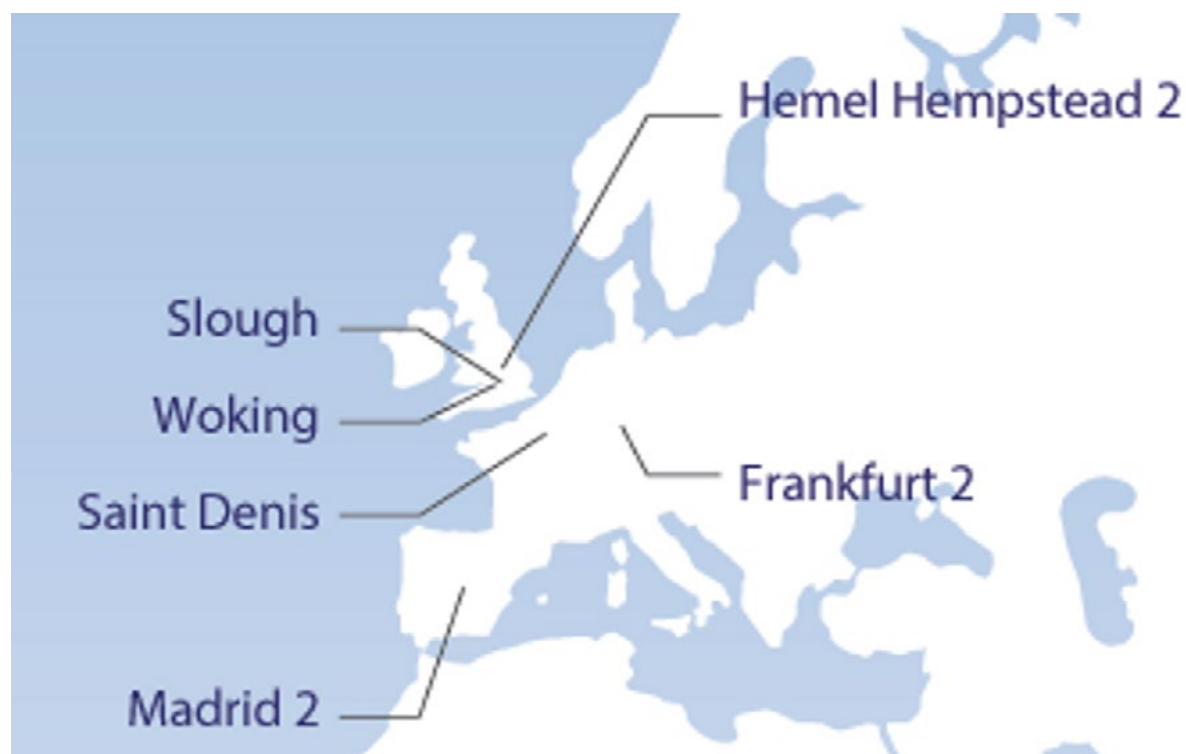
## Choice and flexibility

- ✓ Prime locations worldwide
- ✓ Wide choice of carriers
- ✓ Wide range of services

## Innovation

- ✓ Green data centers
- ✓ Support for high-density computing

NTT Communications key european data centers are mapped out below



# Hemel Hempstead 2 data center specification



## Building

- High density solutions available
- 24 x 7 x 365 building operation
- Secure managed delivery bay with goods lift

## Power

- Dual dedicated 11,000V (HV) grid connections (2N)
- Dedicated 2N redundant HV substations on-site
- Minimum N+N Uninterruptible Power Supply (UPS) with battery back-up
- Back-up generators
- Refuelling contracts to ensure timely replacement

## Cooling

- Primary cooling infrastructure, centrally managed and linked to BMS
- Room air conditioning units
- Regulated humidity
- 1.5 meter clear false ceiling void for hot-air return to Air Handling Units
- Contained hot aisle or chimney rack design for high efficiency cooling

## Fire detection & suppression

- Physical fire protection in hosting suites and in all plant areas
- Fully addressable fire detection system with (Very Early Smoke Detection Apparatus)
- Gas suppression systems to technical areas
- Fire detection and suppression systems interconnected to central BMS
- Manual fire extinguishers located throughout the facility

## Security

- 24 x 7 on-site security
- 3.6m SEAP certified security fence with electrified top
- Secure crash-rated vehicle trap access to loading area
- PAS68 certified anti ram-raider barriers throughout site perimeter
- Blast proof and anti-intruder shielded external windows
- Steel security doors
- External and internal IP CCTV system
- Proximity cards to authorise access levels including man trap access
- Biometric identification

## Building management system

- Power monitoring and building monitored systems to provide alarms
- Power surge management
- Dedicated in-house 24 x 7 facilities management team
- Planned preventative maintenance programmes

## Connectivity

- Access to multiple telecommunication providers
- Diverse cable routing into facility
- Diverse cable routing through raised floor to each suite
- Strict cable management policy
- 2 dedicated Meet Me Rooms(MMR)

## Ancillary space

- Dedicated office space\*
- Disaster recovery suites\*
- Debox and test rooms
- Breakout areas
- car parking spaces

\*If available and contracted by customer

# Woking data center specification



## Building

- High density solutions available
- 24 x 7 x 365 building operation
- 750mm raised floor with 4 metres to the underside of soffit
- Secure managed delivery bay with goods lift
- Floor loading 10KN per sq m

## Power

- Mains power supplied via 2 x 132kV incomers 84MVA
- N+N Uninterruptible Power Supply (UPS) with battery back-up
- Back-up generators
- Refuelling contracts to ensure timely replacement

## Cooling

- Primary cooling infrastructure, centrally managed and linked to BMS
- Room air conditioning units
- Regulated humidity
- Minimum N+2 on all cooling systems

## Fire detection & suppression

- Three-stage fire detection systems in all plant areas
- VESDA (Very Early Smoke Detection Apparatus)
- Fire detection in all rooms, below raised floors and in ceiling voids
- Fire detection and suppression systems interconnected to central BMS

## Security

- 24 x 7, 365 days a year on-site security
- Door access controls at site and building entrances

- Proximity cards to authorise access levels including mantrap access
- External and internal CCTV system
- Intruder detection alarms
- 4 metres secure perimeter fence with trembler wire
- SEAP 3 rated
- Vehicle lock to site entrance
- X-ray scanners

## Building management system

- Power monitoring and building monitored systems to provide alarms
- Power surge management
- Dedicated in-house 24 x 7, 365 days a year facilities management team
- Planned preventative maintenance programmes

## Connectivity

- Access to multiple telecommunication providers
- Diverse cable routing into facility
- Diverse cable routing through raised floor to each suite
- Strict cable management policy
- 2 dedicated Meet Me Rooms(MMR)

## Ancillary space

- Dedicated office space\*
- Disaster recovery suites\*
- Debox and test rooms
- car parking spaces

\*If available and contracted by customer



# Slough data center specification



## Building

- High density solutions available
- 24 x 7 x 365 building operation
- Steel framed building, two stories
- Loading capacity of a raised floor
- Secure managed delivery bay with goods lift

## Power

- Mains power supplied via 2 isolated incomers at 24MVA
- N+N Uninterruptible Power Supply (UPS) with battery back-up
- Back-up generators
- Refuelling contracts to ensure timely replacement

## Cooling

- Primary cooling infrastructure, centrally managed and linked to BMS
- Room air conditioning units
- Regulated humidity
- Minimum N+1 on all cooling systems

## Fire detection & suppression

- Two-stage fire detection systems in all plant areas
- VESDA (Very Early Smoke Detection Apparatus)
- Fire detection in all rooms, below raised floors and in ceiling voids
- Fire detection and suppression systems interconnected to central BMS

## Security

- 24 x 7, 365 days a year on-site security
- Door access controls at site and building entrances
- Proximity cards to authorise access levels including mantrap access
- External and internal CCTV system
- Intruder detection alarms
- Biometric scanners

## Building management system

- Power monitoring and building monitored systems to provide alarms
- Power surge management
- Dedicated in-house 24 x 7, 365 days a year facilities management team
- Planned preventative maintenance programmes

## Connectivity

- Access to multiple telecommunication providers
- Diverse cable routing into facility
- Diverse cable routing through raised floor to each suite
- Strict cable management policy
- Dedicated Meet Me Room (MMR)

## Ancillary space

- Dedicated office space\*
- Disaster recovery suites\*
- Debox and test rooms
- car parking spaces

\*If available and contracted by customer

# Saint Denis data center specification



## Building

- High density solutions available
- 24 x 7 x 365 building operation
- Loading capacity of 1200 kg/sqm

## Power

- Mains power supplied via 2 x 20kV incomers 2 x 12MW
- N+N Uninterruptible Power Supply (UPS) with battery back-up
- Back-up generators
- Refuelling contracts to ensure timely replacement

## Cooling

- Primary cooling infrastructure, centrally managed and linked to BMS
- Room air conditioning units
- Regulated humidity
- Minimum N+1 on all cooling systems

## Fire detection & suppression

- Two-stage fire detection systems in all plant areas
- Smoke detection in all rooms, below raised floors and in ceiling voids
- VESDA (Very Early Smoke Detection Apparatus)
- Fire detection and suppression systems interconnected to central BMS
- CO2 handheld extinguishers

## Security

- 24 x 7, 365 days a year on-site security
- Door access controls at site and building entrances
- Proximity cards to authorise access levels including mantrap access
- External and internal CCTV system
- Intruder detection alarms
- Biometric scanners

## Building management system

- Power monitoring and building monitored systems to provide alarms
- Power surge management
- Dedicated in-house 24 x 7, 365 days a year facilities management team
- Planned preventative maintenance programmes

## Connectivity

- Access to multiple telecommunication providers
- Diverse cable routing into facility
- Diverse cable routing through raised floor to each suite
- Strict cable management policy

## Ancillary space

- Dedicated office space
- Meeting Room
- Parking Area

# Frankfurt 2

## data center specification



### Building

- High density solutions available
- 24 x 7 x 365 building operation
- 750mm raised floor
- Secure managed delivery bay with goods lift

### Power

- Mains power supplied via two way distribution
- N+1 Uninterruptible Power Supply (UPS) with battery back-up
- Back-up generators
- Refuelling contracts to ensure timely replacement

### Cooling

- Primary cooling infrastructure, centrally managed and linked to BMS
- Room air conditioning units
- Regulated humidity
- Minimum N+1 on all cooling systems

### Fire detection & suppression

- Smoke detection in all rooms, below raised floors and in ceiling voids
- VESDA (Very Early Smoke Detection Apparatus)
- Fire detection and suppression systems interconnected to central BMS
- CO2 handheld extinguishers

### Security

- 24 x 7, 365 days a year on-site security
- Door access controls at site and building entrances
- Proximity cards to authorise access levels including mantrap access
- External and internal CCTV system
- Intruder detection alarms

### Building management system

- Power monitoring and building monitored systems to provide alarms
- Power surge management
- Dedicated in-house 24 x 7, 365 days a year facilities management team
- Planned preventative maintenance programmes

### Connectivity

- Access to multiple telecommunication providers
- Diverse cable routing into facility
- Diverse cable routing through raised floor to each suite
- Strict cable management policy

### Ancillary space

- Dedicated office space
- Meeting Room
- Parking Area

# Madrid 2

## data center specification



### Building

- High density solutions available
- 24 x 7 x 365 building operation
- 800mm raised floor with 4 metres to the underside of soffit
- Secure managed delivery bay with goods lift
- Floor loading 10KN per sq m

### Power

- Mains power supplied via 2 x 15kV incomers 16.8MV
- N+N Uninterruptible Power Supply (UPS) with battery back-up
- Back-up generators
- Refuelling contracts to ensure timely replacement

### Cooling

- Primary cooling infrastructure, centrally managed and linked to BMS
- Room air conditioning units
- Regulated humidity
- Minimum N+1 on all cooling systems

### Fire detection & suppression

- Smoke detection in all rooms, below raised floors and in ceiling voids
- VESDA (Very Early Smoke Detection Apparatus)
- Fire detection and suppression systems interconnected to central BMS
- CO2 handheld extinguishers

### Security

- 24 x 7, 365 days a year on-site security
- Door access controls at site and building entrances
- Proximity cards to authorise access levels including mantrap access
- External and internal CCTV system
- Intruder detection alarms

### Building management system

- Power monitoring and building monitored systems to provide alarms
- Power surge management
- Dedicated in-house 24 x 7, 365 days a year facilities management team
- Planned preventative maintenance programmes

### Connectivity

- Access to multiple telecommunication providers
- Diverse cable routing into facility
- Diverse cable routing through raised floor to each suite
- Strict cable management policy

### Ancillary space

- Dedicated office space
- Meeting Room
- Parking Area

Contact Us: [info@ntt.eu](mailto:info@ntt.eu)



[www.eu.ntt.com](http://www.eu.ntt.com)

#### NTT Communications offices in Europe and the Middle East

NTT Europe Ltd. (Headquarters)

3rd Floor, Devon House  
58–60 St. Katharine's Way  
London E1W 1LB  
United Kingdom

Benelux  
+31 23 569 8340

France  
+33 1 73 02 02 03

Germany  
+49 69 1338 68 000

Spain  
+34 902 250 280

Sweden  
+46 8 27 81 04

United Arab Emirates  
+971 4 426 4866

United Kingdom  
+44 20 7977 1000

Connect with us:



YouTube



**Nexcenter**

Copyright © 2014 NTT Europe Ltd.  
Registered company in England and Wales. Registration no. 2307625

The rights of third party trade mark owners are acknowledged.  
Information in this document is correct at time of print and is subject to change without notice.

EUDCB082013-3